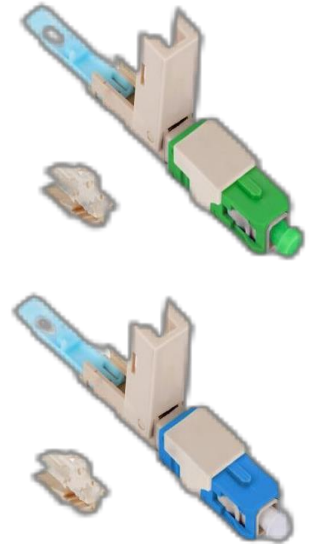


Quick Assembly Connector -drawer type KT-6068 & KT-6066

(Folding Type Boot)

I-Introduction:

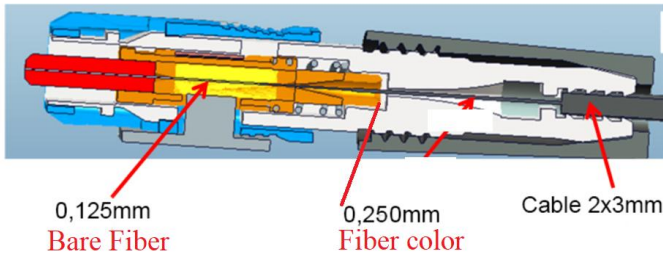
1. Quick Assembly SC connector can provide quick and easy terminations of fibers in the field. It allows the installer to terminate and make connection in minutes at equipment and fiber patch panels. This connector system with features of high installation quality, high success rate and high reliability.
2. It is designed to manage secure on-site fiber connections with unique V-groove technology and 3-way cable locking system. It reduces connection defect rate by allowing re-assembling several times in the field without additional tool



II- Features :

1. Compliance with Standard TIA/EIA 604-3 (SC)
2. 3-Way Cable Locking System: 0.125mm, 0.25mm, 3x2mm
3. Re-Assembling: ≥ 10 Times
4. Operation Temperature: - 20oC to + 75oC
5. Relative Humidity: < 95% RH
6. - Accommodating 3x2mm cable
7. Installation Time: Approx. 90 sec

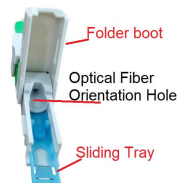
8



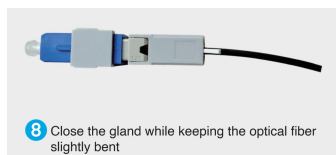
8. The 3-Way Cable Locking System: 0.125mm, 0.25mm, 3x2mm

10. Optical Fiber Orientation Hole:

- Bright colored funnel-shaped fiber optic guide hole for easy installation



12. Installation and accompanying tools: the connection operation is guaranteed to be simple and easy. Each fast connector must have a mechanism with a specialized tool kit to open and close the fast connector.



16. Tail cap locks with a folding mechanism.



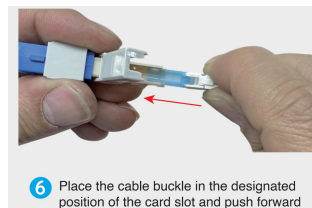
18. Shell material: Made of high-quality, smooth engineering plastic. Printed with information [manufacturer name, model, etc.] that will not fade over time.

9. Polishing of Ferrule is tested by 3D Geometric tester: Pass



- Radius of Curvature APC: 5 ~ 12mm
- Radius of Curvature UPC: 5 ~ 25mm
- Apex Offset: < 50um
- Fiber Height: -100 ~ 100nm

11. With sliding tray for easy fiber orientation and cable in/out holder



13. The brand name is printed clearly and firmly on the connector cover.

14. The serial number is printed on the device body, which will not fade over time

15. The month and year of manufacture are clearly and firmly printed on the connector cover (for warranty purposes)



17. Size: compact, suitable for secure connection with tight buffer optical subscriber line with size [2.0x3.0]mm. And allows compact installation in OTB/Splitter box, with optical fiber bending radius always ≥ 30 mm.

19. Fiber optic Ferrule : made of Zirconia Ceramice material



III- Application :

FTTH & Outdoor Fiber Terminal End

Harsh Environment

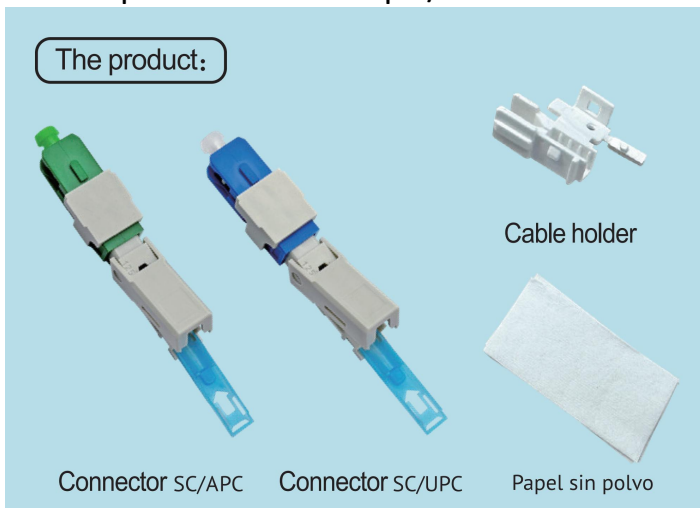
FTTA BBU RRU

Data Video Transmission

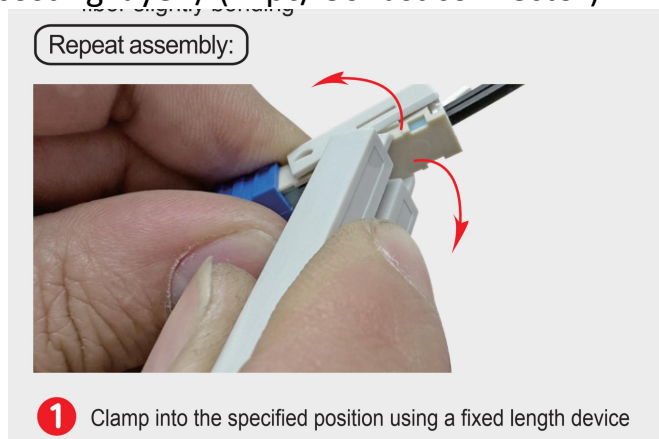
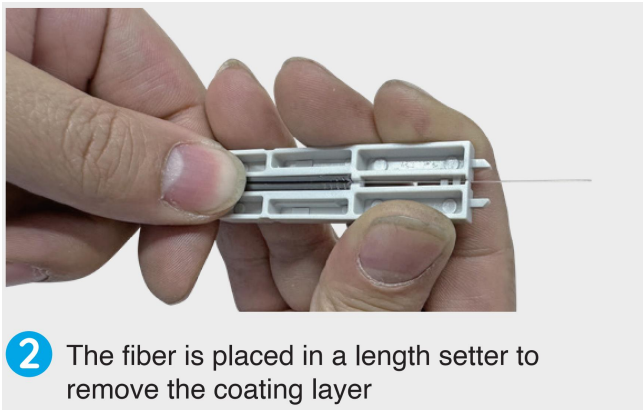
Optical Fiber Access Of Mobile Base Station

IV- Package and Accessories

1. Papel sin Polvo : 01 pc / 1 fast



2. Tool for setting a length to remove the costing layer / (1 pc/ 30 fast connector)



V- Specification:

| I | KT-6066 | KT-6068 |
|--|--|----------|
| Length | 52mm | |
| Ferrules | SM/UPC | SM/APC |
| Inner Diameter of ferrules | 125um | |
| Optical fiber standard to connect to fast connector: | G.652D and G.657A1. - Operating wavelength: 1310 nm, 1490 nm, 1550 nm and range [1260 nm ~ 1580]nm for XGS-PON. | |
| Insertion Loss | AVG≤0.3dB MAX≤0.3dB | |
| Return Loss | UPC≥45dB | APC≥50dB |
| Working Temperature | -20~+75°C | |
| Storage Temperature | -40~+85°C | |
| Tension | ≥ 30N for jacket (Insertion loss variation: ≤ 0.2dB (before, after and during the test) ≥ 3N Holding force of fiber optic lock (IL change ≤ 0.2 dB) | |
| Mating Times | 500Times (Insertion loss variation: ≤ 0.2dB (before, after and during the test) | |
| Cable Diameter | DROP CABLE : 2*1.6mm /2*3.0mm /2.0*5.0mm | |

Operation Instruction:



SM/APC



SM/UPC

Necessary Tools:



FTTH Drop Cable Stripper



Fiber Cleaver



Dust-free cloth & alcohol bottle



Fixed length device